



testXpert

Take your testing to the next level

What you can expect today

1. **Simple operation**
2. **Flexible integration**
3. **Future-proof design**
4. **Reliable & efficient testing**



become a
testXpert®



Simple operation

#01



Simple operation

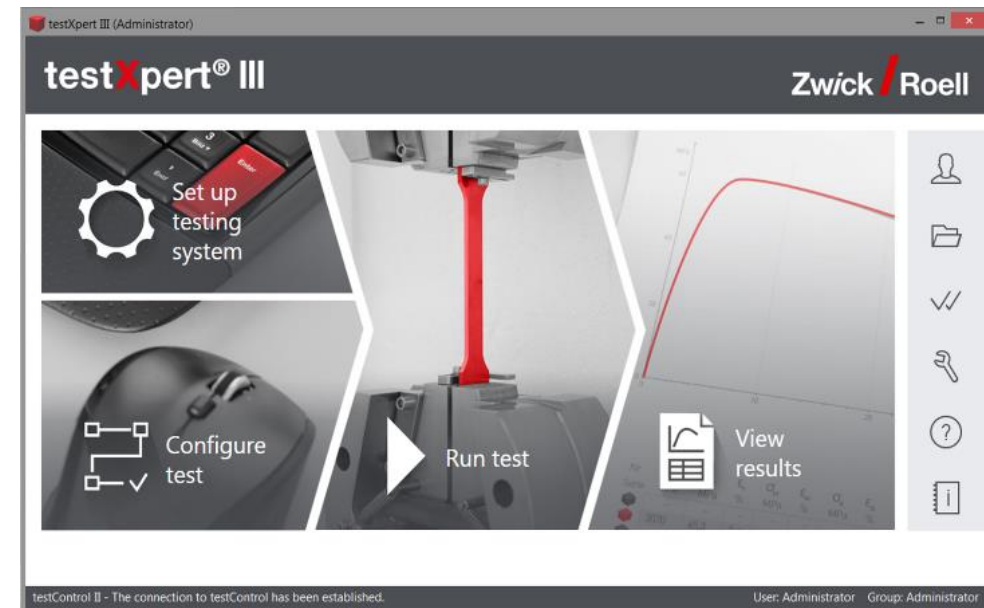


The user management reduces onboarding of new staff to a minimum.

- Each user group only has access to previously defined test programs.
- Each user group can be assigned rights all the way down to the parameter level. For example, when the test speed is relevant for the result.



Tester



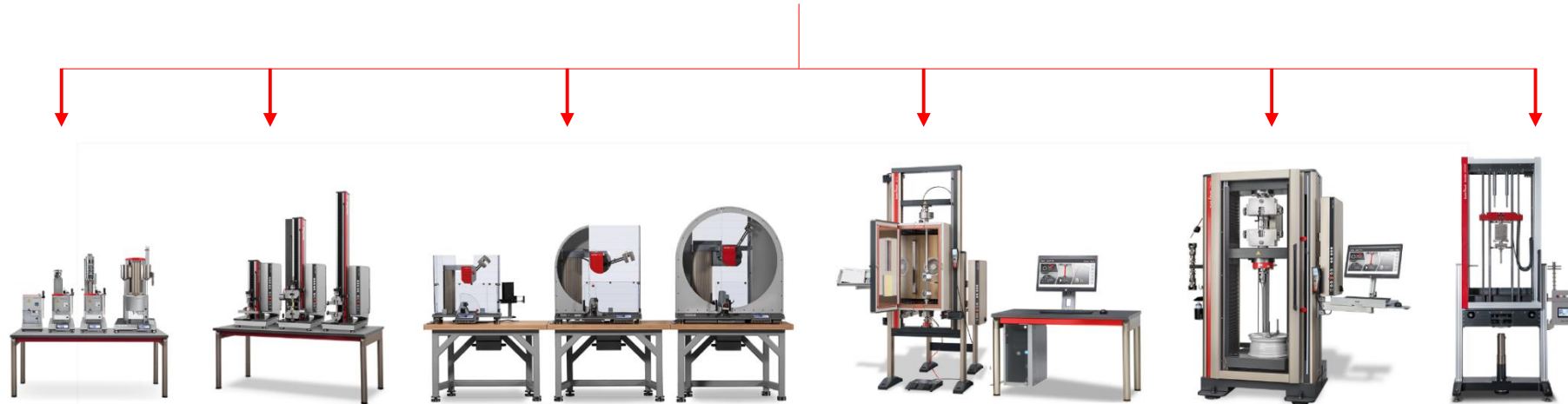
Administrator

Simple operation



testXpert for all your machines and instruments, minimizes training and onboarding.

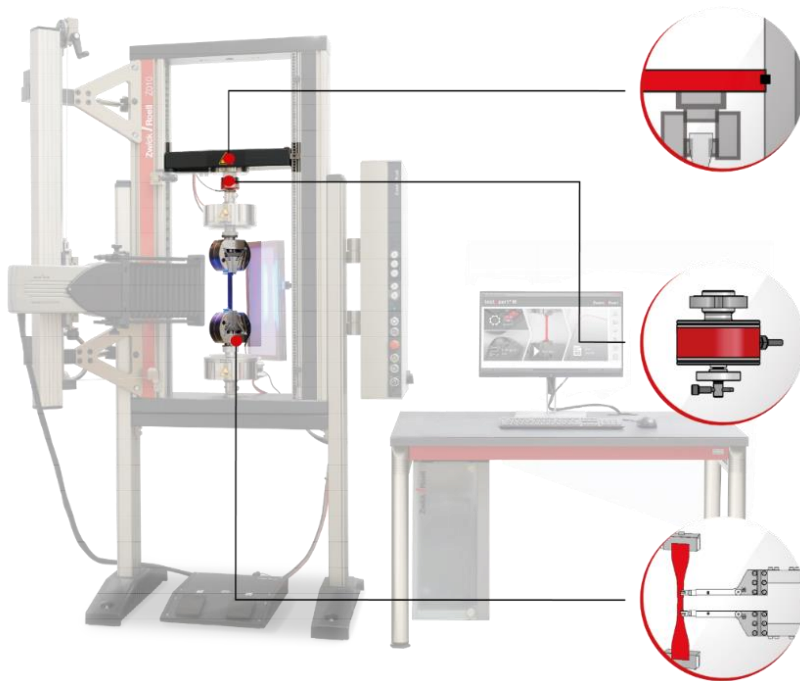
testXpert®





Predefined machine configurations are guaranteeing optimum repeatability without any operator effort.

- The once defined machine configurations guarantees the same test conditions for all tests in a testing machine



- Exact crosshead position
- **Precise absolute grip to grip distance** (e.g. the 115mm from the ISO527)
- Automatic sensor detection
- Application dependent sensor assignment
- Intelligent sensor protection
- Application-specific measuring ranges, filter functions and controller settings
- User and specimen protection

become a
testXpert®



Flexible integration

#02



Flexible integration



Smooth integration into your existing processes are creating a seamless solution for your workflow.

- testXpert automates the integration of a testing machine into your CAQ/ERP system and prevents incorrect entries and transmission errors. This can be done with standardized software interfaces.

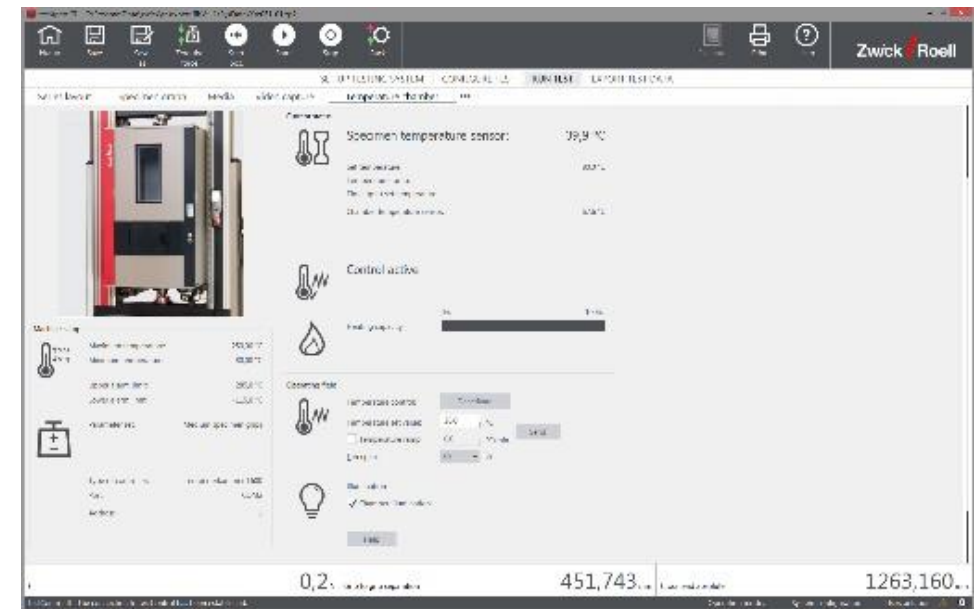
testXpert®





The automatic sensor recognition guarantees the simple use without any intervention.

- ZwickRoell testing software automatically identifies the type and properties of the sensor:



become a
testXpert®

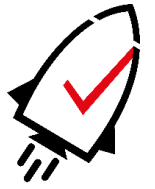


Future-proof design

#03

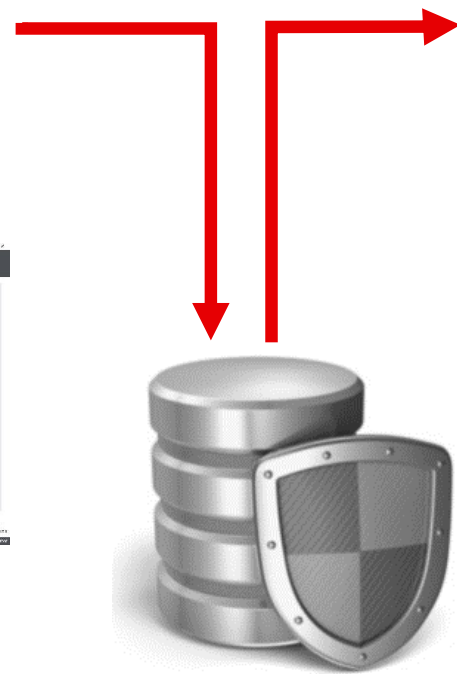


Future-proof design



testXpert Analytics, the browser-based analysis platform for quick access to all test and machine data.

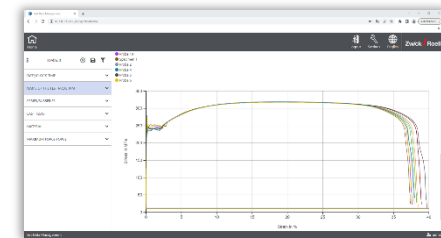
testXpert®



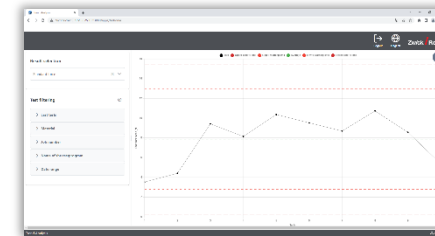
testXpert® Analytics



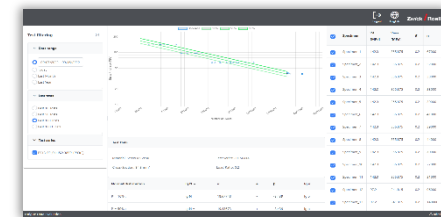
Condition Monitoring



Test Data Management



Trend Analysis

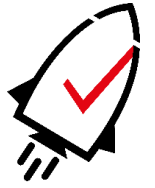


Fatigue Data Evaluation

Storage

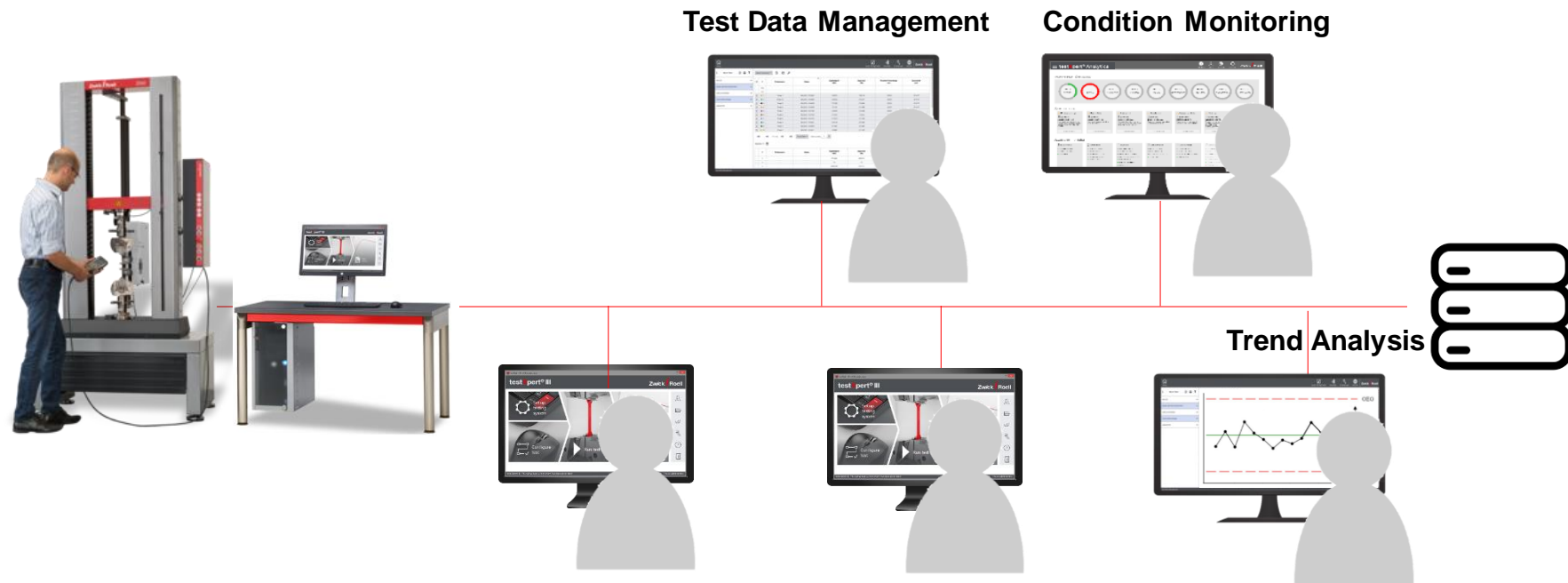


Visit us on the data management center



Simple evaluation across series and test types on all test data at any time at any place.

- testXpert is a **multi-user license** that can be installed on any PCs within your company.
- With a testXpert installation operated in simulation mode you can remotely view and re-evaluate your data.
- With testXpert Analytics analyze and process your data.





testXpert is ready for future testing challenges.

- testXpert is prepared for a full automation of your test sequences through a robotic system.



Materials-testing machine with
testXpert®

Robotic-testing-system
autoEdition® 3

become a
testXpert®



Reliable & efficient testing

#04





Standardized solutions from ZwickRoell are leading to 30% and more time savings



Sample preparation

- Reduce input errors and saves time with the full integration of measurement devices in testXpert
- Eliminates manual input and save time with the automatic Import of sample and organization data from your ERP or host system



Test

- Avoid extensive preliminary tests with each material by using automated event-controlled speed switching e.g. after the determination of the E-Modulus or Yield-Point.
- No user parametrization required to achieve standard compliance with predefined Standard Test Programs
- Less user interaction-due to automatic hydraulic or pneumatic grips which are automatically controlled by testXpert
- No user interaction thanks to automatic Extensometer which are controlled by testXpert to attach, detach and set the gauge length
- Start immediately your testing without setting up your machine with predefined Machine Configurations (PMC)
- No re-measurement and adjustment of the starting position with a precise and absolute tool separation one time defined in the PMC
- Start immediately your testing at elevated temperatures with a complete and automatic control of a temperature chamber, with automatic start after a preconditioning, ramps, control factors, etc..
- No PID factors have to be determined by elaborate preliminary tests for each material with the adaptive controller
- No preliminary tests for component testing are needed because of the real-time correction of the machine deformation for precise measuring and positioning
- Reduce calculation errors and save time with the determination of the measurement uncertainty calculated automatically by testXpert



Results

- Save time and reduce errors when merging individual records by standardized exports of a complete series in different formats e.g. directly into Excel or a database via ODBC
- No extra samples and time needed with the videoXtens Re-Run option in case of a break outside the gauge length, the test can be re-evaluated with adjusted gauge length
- Reduces your documentation effort dramatically with the traceability option combined with an IQ/OQ service
- Create new results and re-evaluate a single sample or complete test series with just one mouse click
- Increase the quality of your documentation and evaluation options with the time synchronized VideoCapturing

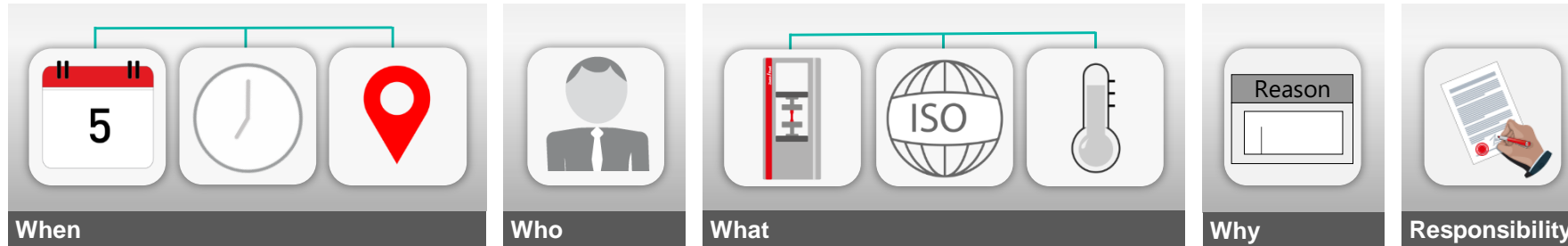


Analysis

- Analyze and evaluate your tests away from the testing machine for high effective testing with testXpert Analytics



Complete transparency and documentation of the test results.



- „ Who does what, when and why?“
testXpert logs all test and system-relevant inputs and actions

