

testXpert® III

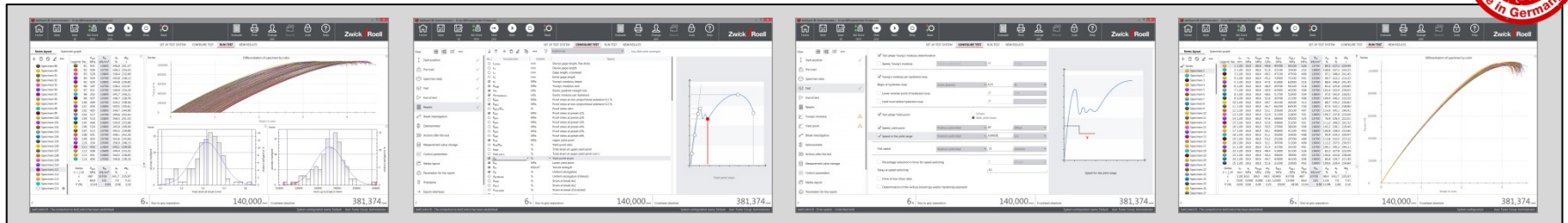
October 2016, Ulm

testXpert III is the result of close cooperation with software users in the materials testing industry and the experience from over 30,000 successful testXpert installations.

- Standardized user concept for all applications and test types
- A prepared standard test program for each test defined by a standard



- Perfect for various requirements, from production to research



testXpert III - C:\ProgramData\Zwick\testXpert IIIa176\SysData\Samples\xtc051_01 DIN EN ISO 527-1_1.zs2

testXpert® III **Zwick / Roell**

Set up testing system

Configure test

Run test

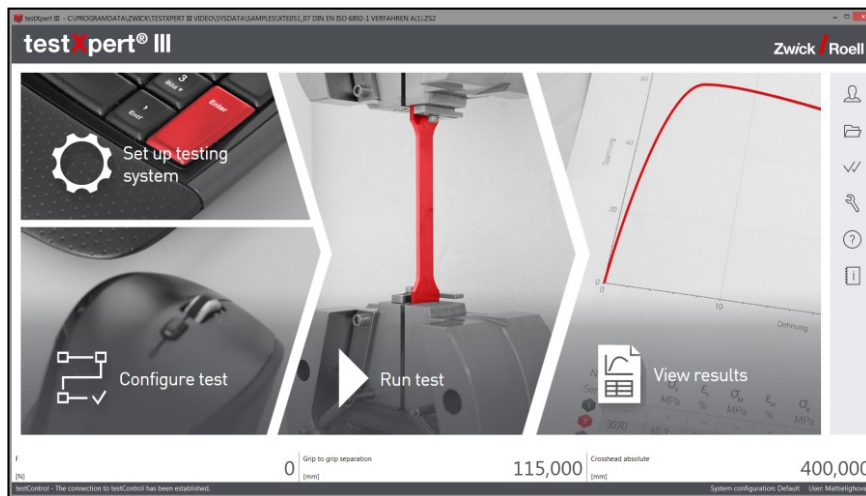
View results

F 0 N Grip to grip separation 100,000 mm Crosshead absolute 400,000 mm

testControl - The connection to testControl has been established. System configuration name: Default User: FinkbeinerU

Getting started is easy! From the very start, users can easily and intuitively navigate testXpert III.

- In testXpert III, all test-relevant settings are logically grouped and kept separate from general system settings.
- testXpert III adapts to user management requirements, providing only those actions relevant to the specific user role.



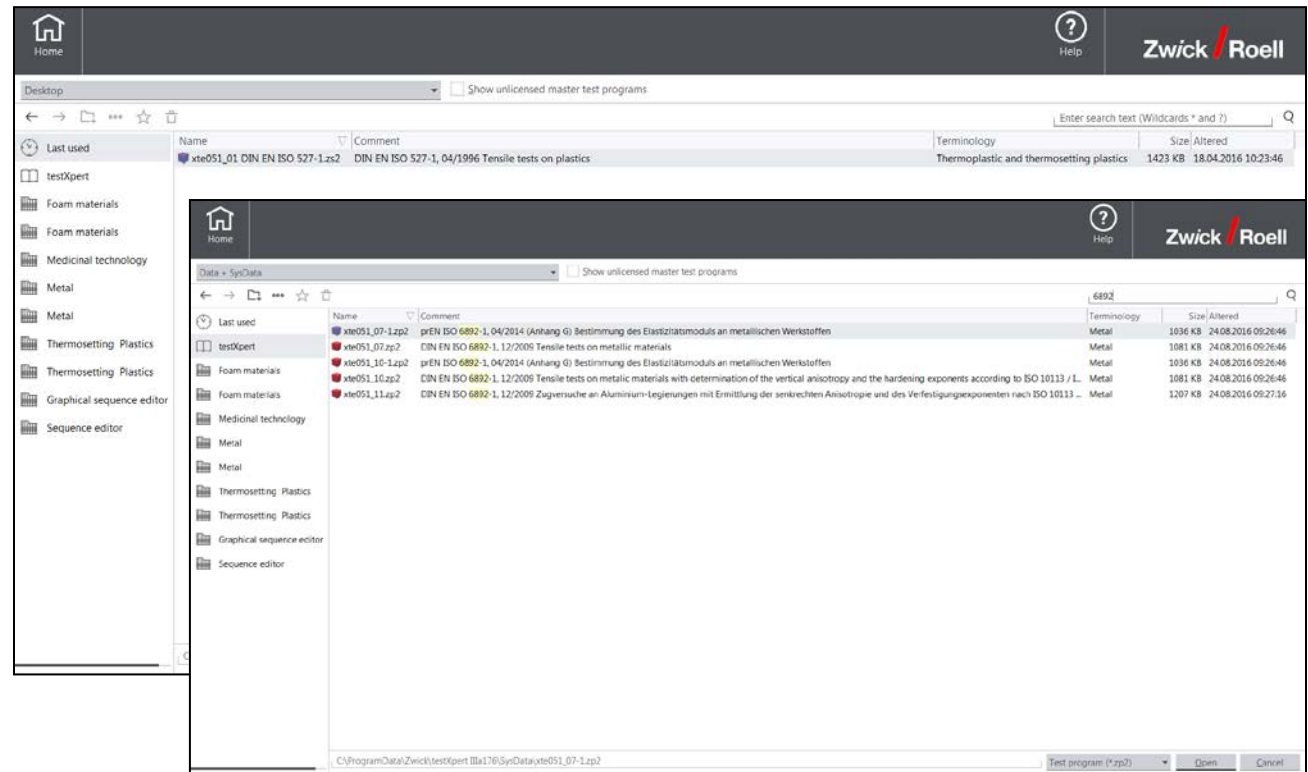
Administrator



Tester

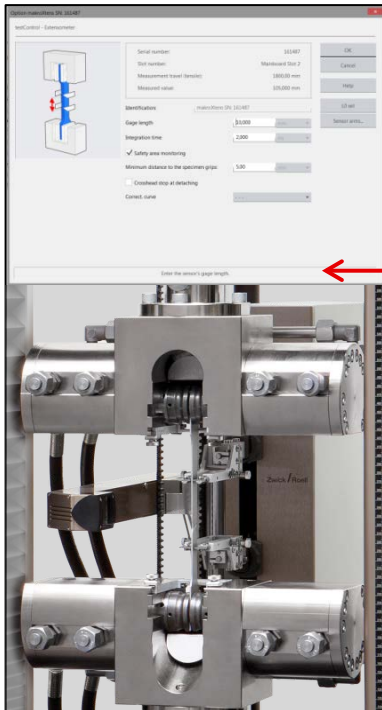
The File Open Dialog ensures you find your test program quickly and sort them as you wish.

- Search function
- Favourites
- Standardized Folder Selection
- Folder Navigation
- Industry Selection

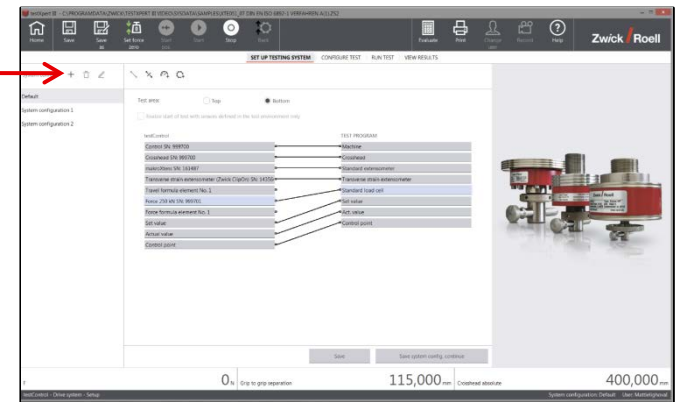


The unique System Configuration Builder makes it possible to define reproducible test conditions and offers maximum safety for the user and testing system.

Safety and tool distance



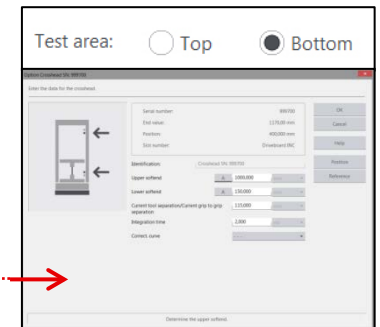
Select sensor limits



Crosshead position

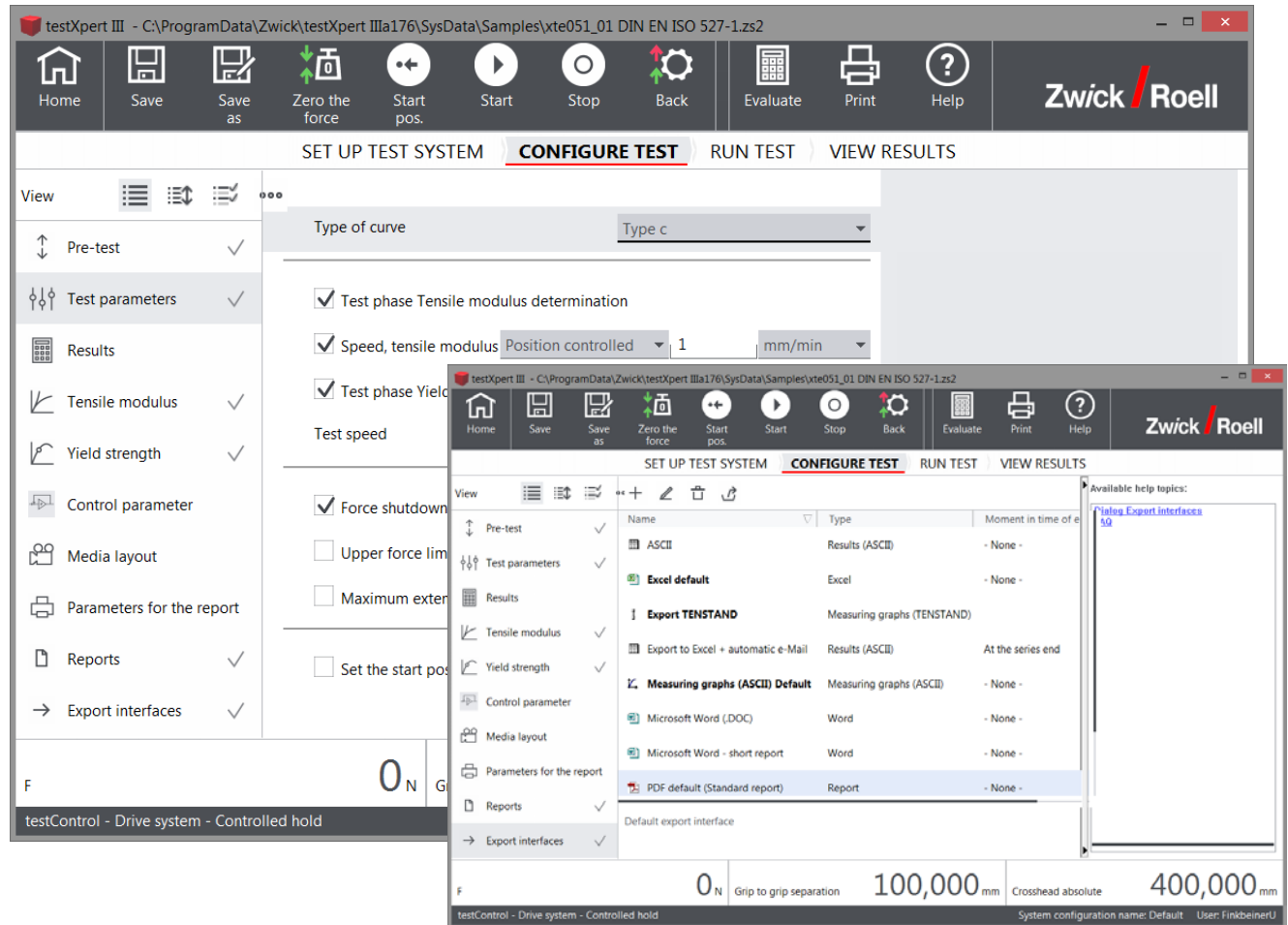


Test area



Many settings for the test procedure can be configured in „Configure Test“.

- Standard and User-Specific Assistant
- Test Sequence
- Results
- Report
- Export



With „Run Test“ you will see both a live view of the currently running test and previously recorded results.

- Ergonomic layout
- Colour coding of samples
- Highlighting of results in table
- Series layout
- Descriptive graphics
- Media and Video Capture

The screenshot displays the testXpert III software interface during a test run. The top menu bar includes options like Home, Save, Zero the force, Start pos., Start, Stop, Back, Evaluate, Print, and Help. The main window is divided into several sections:

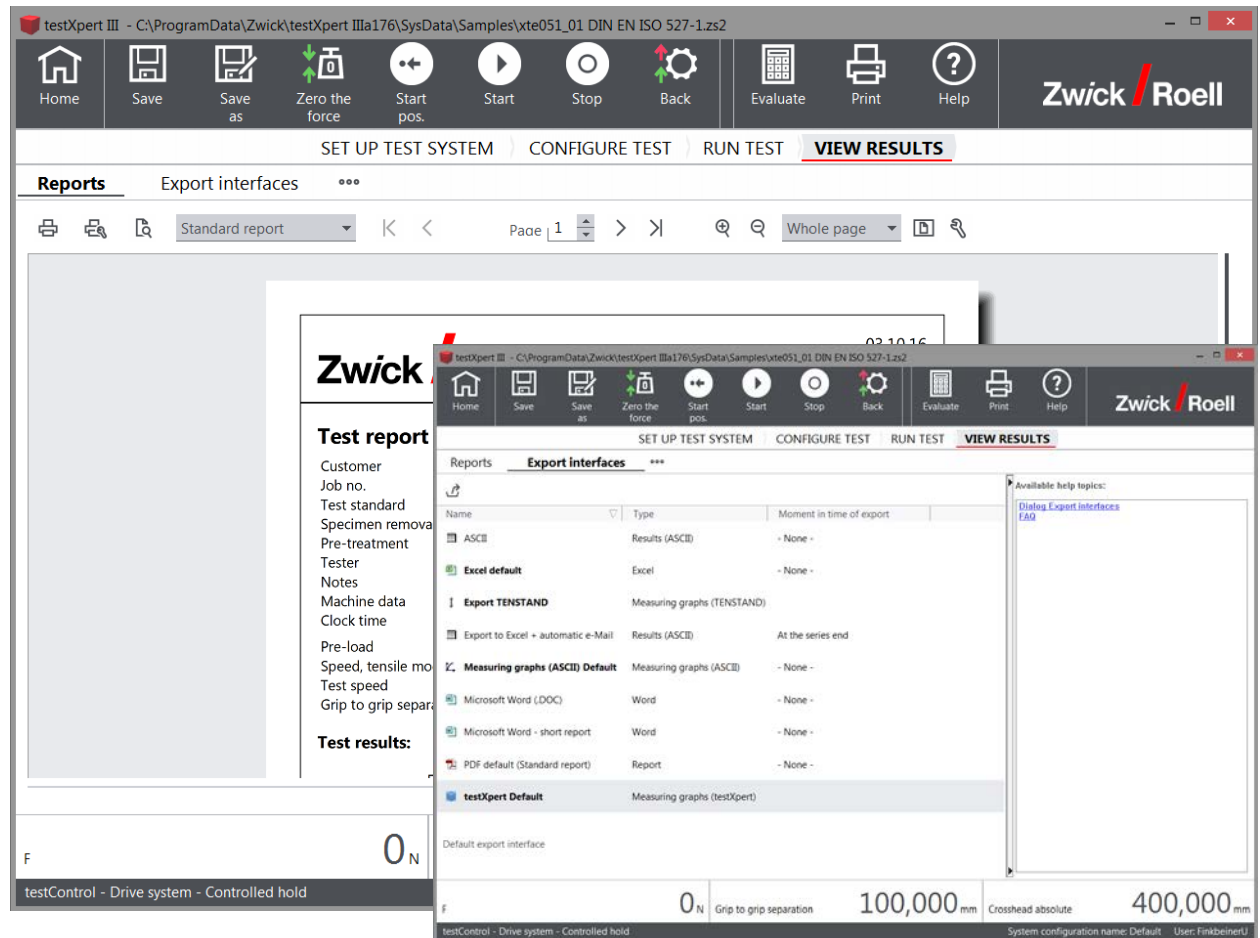
- Series layout:** A list of specimens (Specimen 1 to 6) with color-coded markers.
- Specimen graph:** A 3D model of a specimen with red arrows indicating thickness and width measurements.
- Legend Table:** A table listing specimen parameters for 5 different series.
- Series Table:** A summary table for the current series (n=5).
- Stress-strain Graph:** A plot titled "Differentiation of specimen by color" showing Stress in MPa on the y-axis (0 to 60) and Strain in % on the x-axis (0 to 30). Multiple colored curves represent different specimens, showing a peak stress around 60 MPa and a strain of approximately 10-15%.
- Test Parameters:** At the bottom, it shows "Grip to grip separation" of 100,000 mm and "Crosshead absolute" of 400,000 mm.

Legend No.	E_t MPa	σ_Y MPa	ϵ_Y %	σ_M MPa	ϵ_M %	σ_B MPa	ϵ_{18} %	b mm	h mm	A_0 mm ²
1	3110	66,2	7,1	66,2	7,1	52,0	26,6	9,90	3,96	39,20
2	3070	65,3	7,4	65,3	7,4	51,3	24,9	9,91	3,95	39,14
3	3080	66,0	7,1	66,0	7,1	54,0	30,3	9,92	3,96	39,28
4	3040	65,4	7,3	65,4	7,3	52,2	14,6	9,92	3,95	39,18
5	3050	66,0	7,2	66,0	7,2	61,6	24,49	0,10	0,14	0,17

Series	E_t MPa	σ_Y MPa	ϵ_Y %	σ_M MPa	ϵ_M %	σ_B MPa	ϵ_{18} %	b mm	h mm	A_0 mm ²
n = 5										
x	3070	65,8	7,2	65,8	7,2	54,4	23,9	9,91	3,954	39,18
s	27,9	0,391	0,13	0,391	0,13	4,15	5,85	0,01	0,005477	0,07
v [%]	0,91	0,60	1,76	0,60	1,76	7,64	24,49	0,10	0,14	0,17

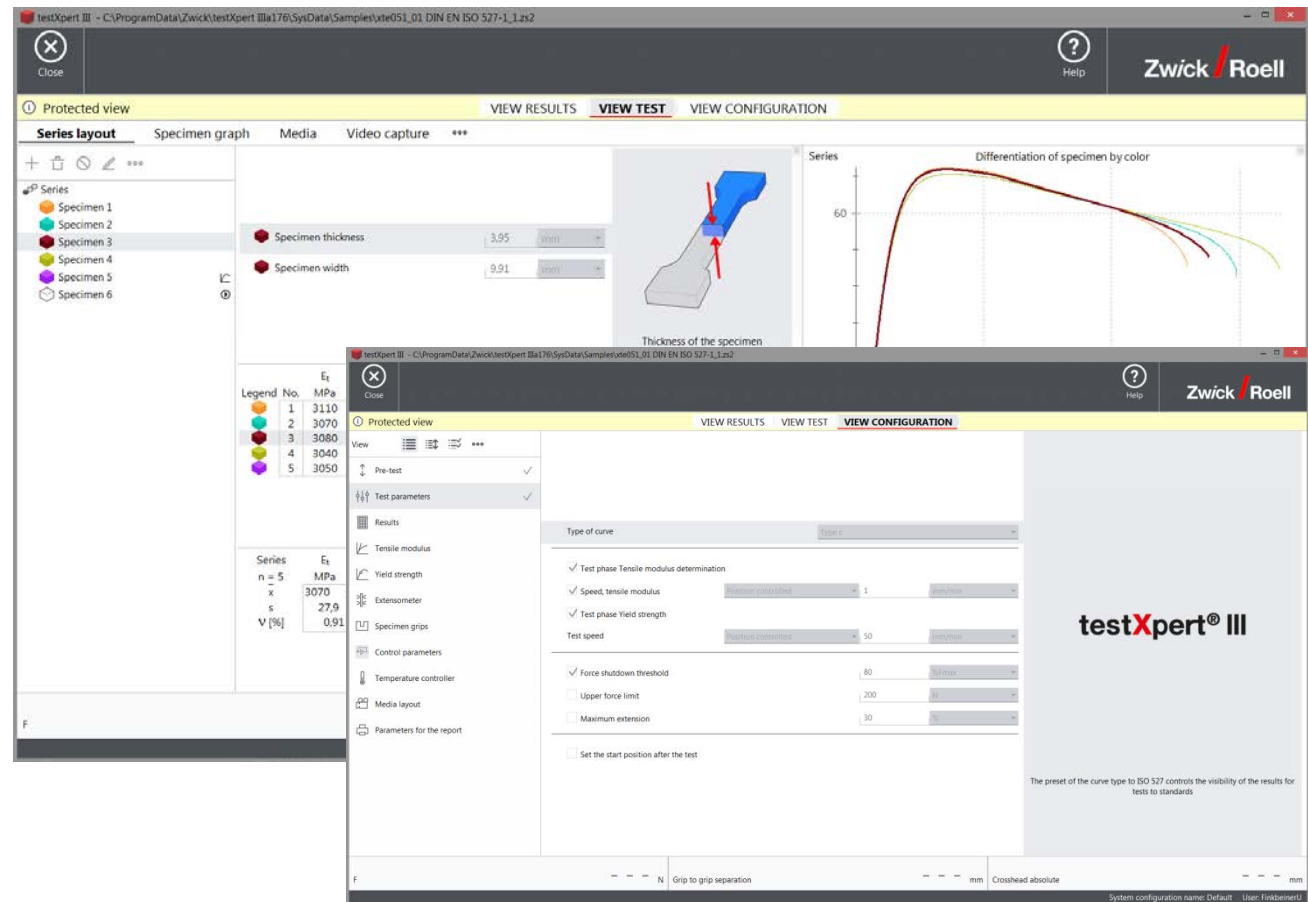
Multiple possibilities to process recorded results are offered in „View Results“.

- Report preview
- Report printing
- Export interfaces
 - Database
 - ASCII
 - Word
 - Excel
 - PDF



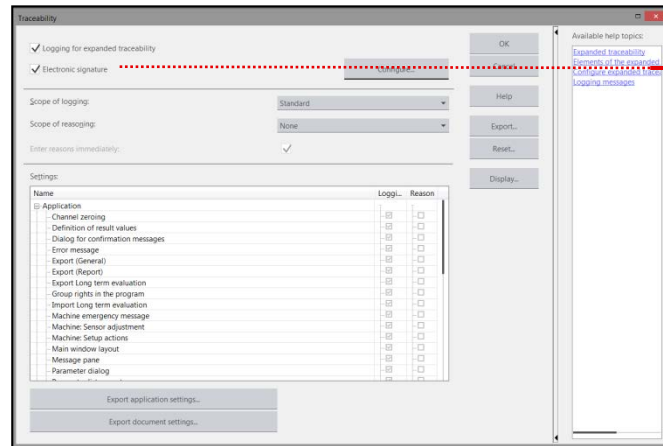
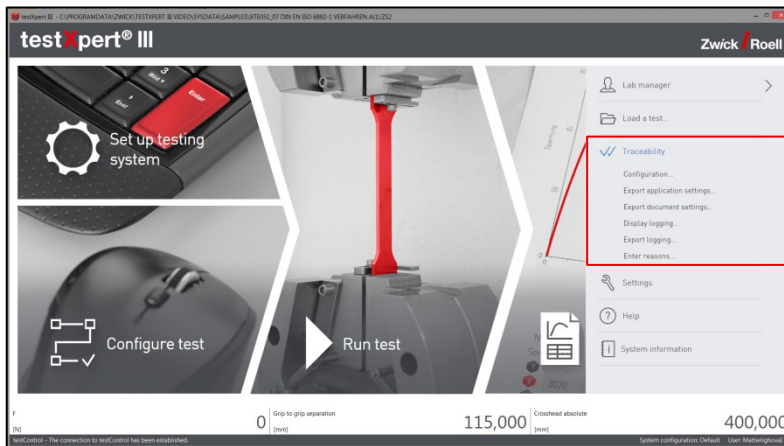
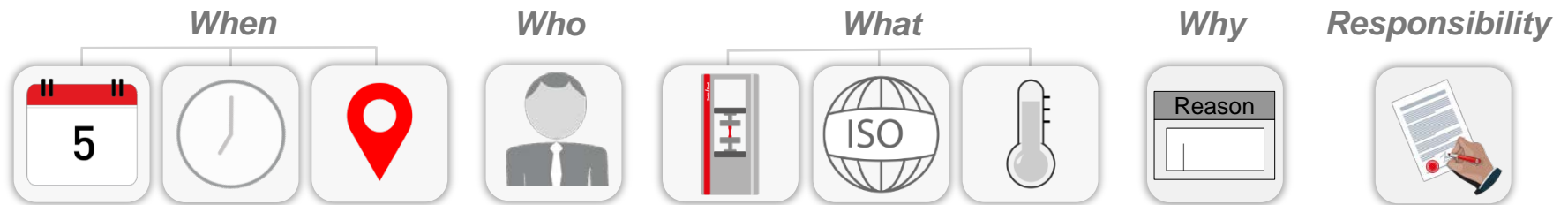
Review previously recorded results in a protected view directly from the home screen.

- Protected view
- Report preview
- Verification of settings and parameters
- Overview of recorded data, curves and results



testXpert III provides traceable results that cannot be manipulated.

- testXpert III logs all test- and system-relevant actions and settings.



Electronic signature

testXpert III - C:\ProgramData\Zwick\testXpert IIIa176\SysData\Samples\xtc051_01 DIN EN ISO 527-1_1.zs2

testXpert® III **Zwick / Roell**

Set up testing system

Configure test

Run test

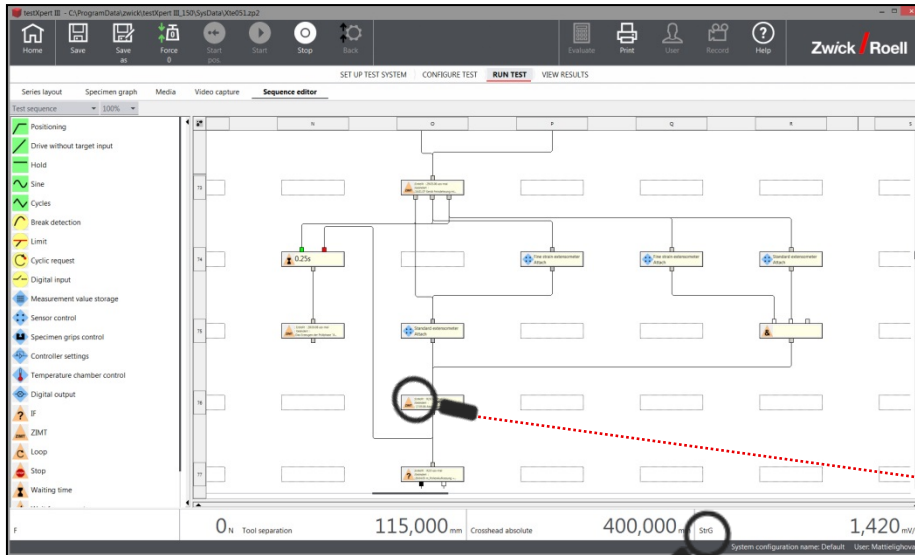
View results

F 0 N Grip to grip separation 100,000 mm Crosshead absolute 400,000 mm

testControl - The connection to testControl has been established. System configuration name: Default User: FinkbeinerU

Unique test and evaluation requirements are possible with testXpert III: we get started where the others leave off!

- Straightforward graphical test sequence programming



- Multi-faceted and open results calculation
- Time-synchronized video recording
- Extensive control options (for example, true strain rates)

ZIMT—the macro programming language



Versatile sensor interfaces



What should you bring back with you?

The screenshot displays the testXpert III software interface. At the top, the title bar shows the file path: C:\ProgramData\Zwick\testXpert IIIa176\SysData\Samples\xt051_01 DIN EN ISO 527-1_1_zs2. The main window features the testXpert III logo and the Zwick / Roell logo. The interface is divided into three main sections: 1. 'Set up testing system' (top left) with a gear icon, showing a close-up of a keyboard with the 'Enter' key highlighted. 2. 'Configure test' (bottom left) with a flowchart icon, showing a computer mouse. 3. 'Run test' (center) with a play button icon, showing a red test specimen being held by a testing machine. To the right of the 'Run test' section is a 'View results' section with a document icon, showing a stress-strain graph with a red curve. A vertical toolbar on the far right contains icons for user profile, folder, checkmark, wrench, question mark, and help. At the bottom, a status bar shows '0 N Grip to grip separation', '100,000 mm Crosshead absolute', and '400,000 mm'. A message at the bottom left states 'testControl - The connection to testControl has been established.' and the bottom right shows 'System configuration name: Default User: FinkbeinerU'.